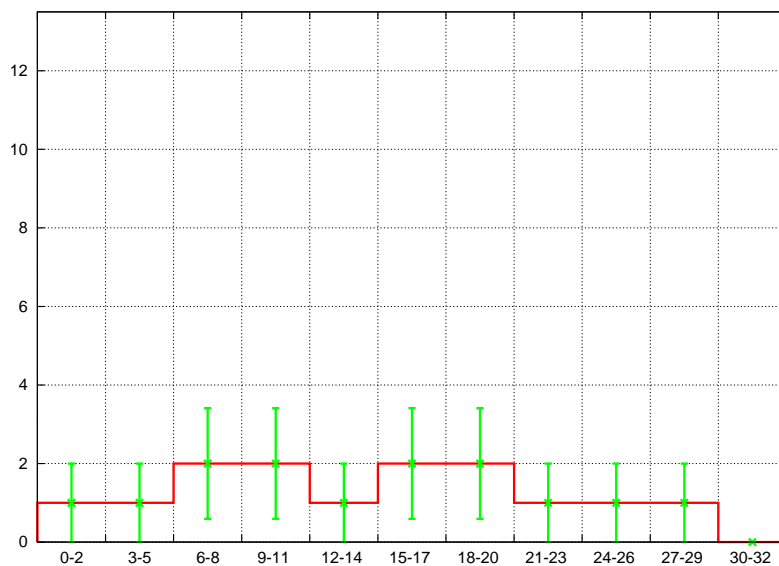


## Valutazione dei compiti.

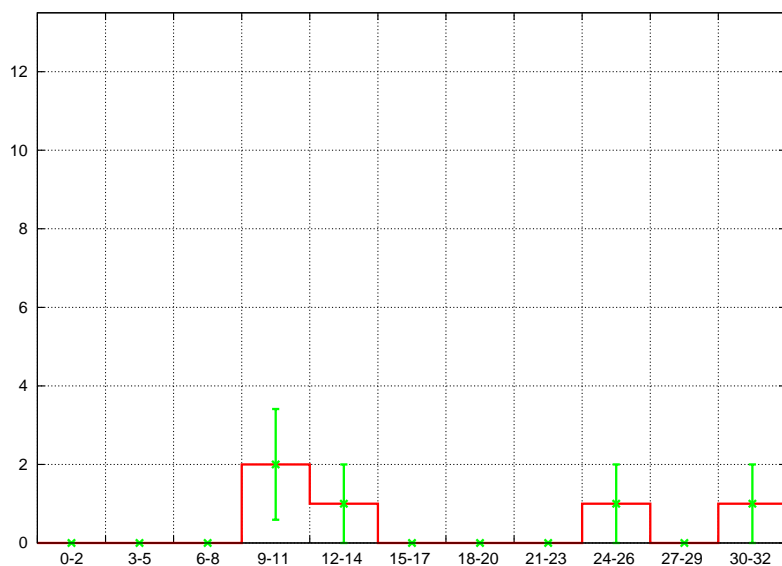
N	Matricola	P	Esercizi				Quesiti					Globale Media
			1	2	3	Media	1	2	3	4	Media	
1	0000178486	RT										
2	0000257185		0	3	0	10.3	1	3	0	0	10.3	<b>10</b>
3	0000312535		3	0	0	10.3	1	0	0.5	0	4.5	<b>7</b>
4	0000314117	RT										
5	0000314632		3	3	0	20.7	2.5	3	0	0	14.2	<b>17</b>
6	0000451464		3	3	3	32.0	3	1.5	3	0	19.4	<b>26</b>
7	0000472325		3	3	0	20.7	3	0	0	0	7.8	<b>14</b>
8	0000628106		3	3	0	20.7	3	0	2	0	15.5	<b>18</b>
9	0000629752	RT										
10	0000651610		0	0	0	0.0	0	0	0.5	0	1.9	<b>1</b>
11	0000652969		0	0	0	0.0	1.5	1	0	0	7.8	<b>4</b>
12	0000659753		3	0	3	20.7	3	3	0	1	19.4	<b>20</b>
13	0000662861		3	3	3	31.0	1.5	2.5	0.5	0	11.6	<b>21</b>
14	0000663315		1.5	1	0	8.6	3	1.5	0.5	0	13.6	<b>11</b>
15	0000665364		1.5	0	3	25.8	3	2	2	3	32.0	<b>29</b>
16	0000669483		3	3	3	31.0	0	0	0	0	0.0	<b>16</b>
17	0000670577		0	1	0	3.4	0	0	0	1.5	7.8	<b>6</b>



Studenti iscritti	17
Compiti consegnati	14
Voto minimo	1
Voto massimo	29
Voto medio	14.3
Voto mediano	15.0
90-esimo percentile	27.5
95-esimo percentile	29.0
Sufficienti ( $\geq 18$ )	5
% Sufficienti ( $\geq 18$ )	35.7

## Valutazione dei compiti.

N	Matricola	P	Esercizi				Quesiti					Globale Media
			1	2	3	Media	1	2	3	4	Media	
1	0000441846		0	0	0	0.0	3	2	2.5	0	19.9	<b>10</b>
2	0000475223	RT										
3	0000479839		3	3	3	32.0	3	3	0.5	2.8	31.6	<b>32</b>
4	0000589094		0	3	0	10.3	3	1	1	0	14.9	<b>13</b>
5	0000652375	RT										
6	0000664764		0	3	0	10.3	1	3	0	0	10.3	<b>10</b>
7	0000680035		3	3	3	32.0	2	3	3	0	20.7	<b>26</b>



Studenti iscritti	7
Compiti consegnati	5
Voto minimo	10
Voto massimo	32
Voto medio	18.2
Voto mediano	13.0
90-esimo percentile	32.0
95-esimo percentile	32.0
Sufficienti ( $\geq 18$ )	2
% Sufficienti ( $\geq 18$ )	40.0